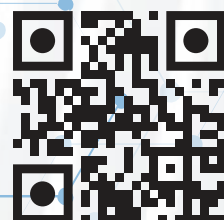


Catalog of Intelligent Lars Lighting luminaires 2025

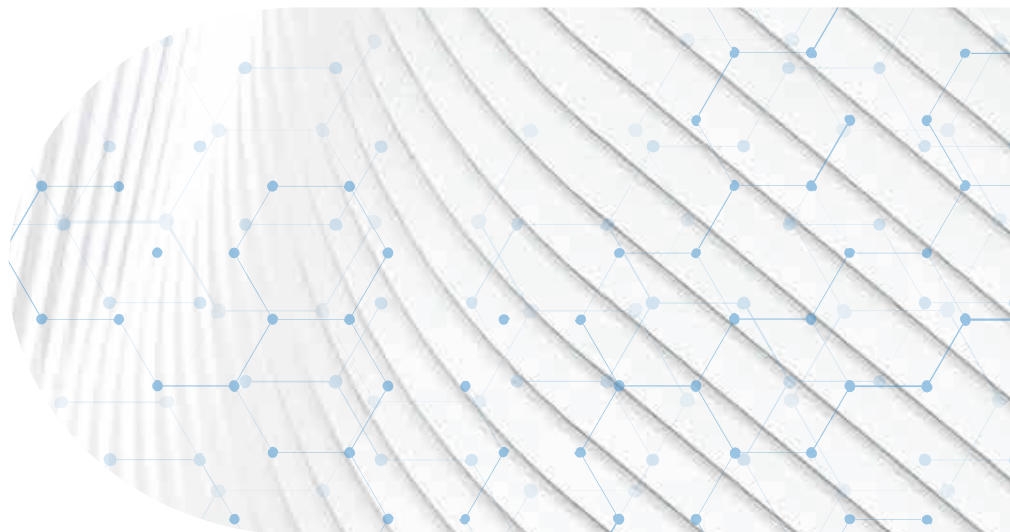
Equipped with an **intelligent** motion, twilight
and light mixing sensor with **AI technology**

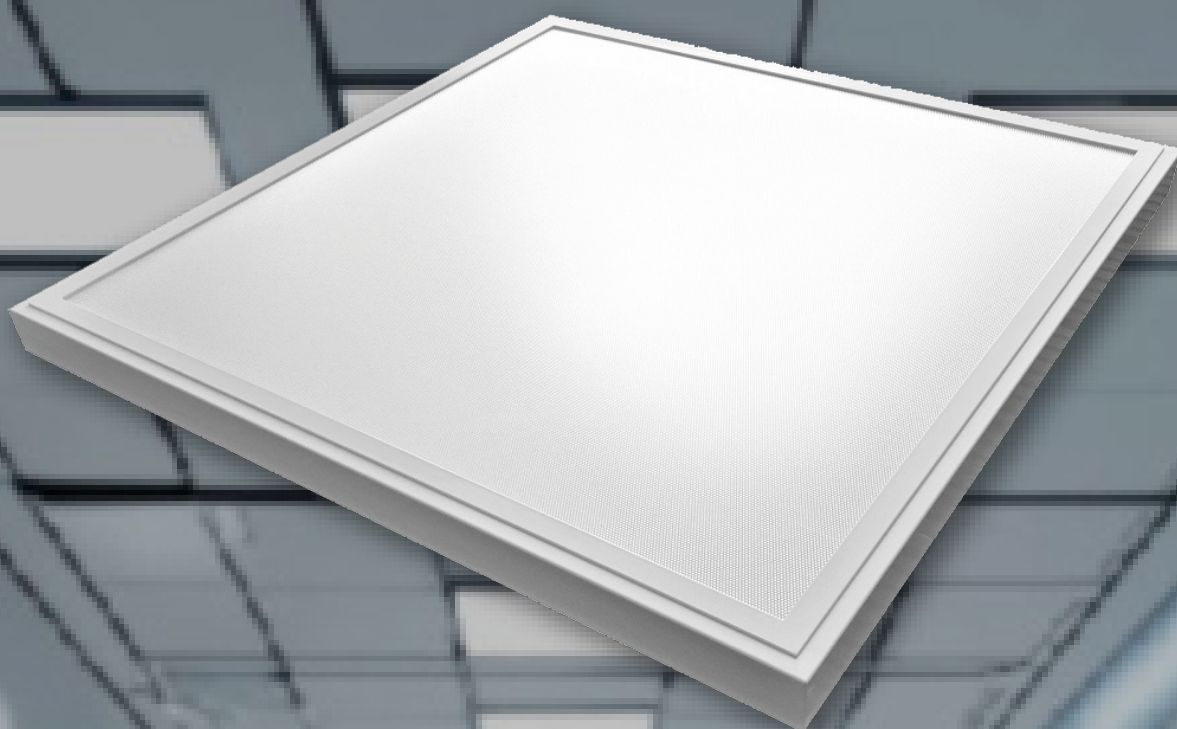


Product list:

Page:

- 2. Smart Panel 60x60mm
- 4. Smart Panel Long 120x30mm
- 6. Linear Light
- 8. Ceiling Light
- 10. Downlight Spot
- 12. Smart Hermetic 60cm
- 14. Smart Hermetic 120cm
- 16. High Bay Ring
- 18. Flood Light 015
- 20. Flood Light 015 - 400W
- 22. Flood Light 016
- 24. Flood Light 015 - 400W
- 26. Linear High Bay
- 28. Smart Beam
- 30. Led Road Smart
- 32. Led Park Light
- 34. Led Stadium Light
- 36. Intelligent Sensor LL111DH, LL112DH





When developing Lars Lighting **SMART PANEL**, we put technical aspects and component quality first. We wanted the luminaire to have a simple design and construction that meets market standards. Therefore, to increase protection against overheating of the diodes, the luminaire has separate chambers for the power supply and the LED module. Maintenance issues are extremely important to us, which is why the luminaire has an easy opening system and tool-free access to the power supply chamber, which significantly facilitates its possible servicing. Additionally, SMART LED PANEL gives the user the possibility of integrating with any intelligent control network, thus maximizing savings, all using the best quality components. Therefore, SMART LED PANEL is a solution that guarantees excellent **quality light, as well as significant savings** for the local budget and an increase in the quality and comfort of employees' work and a quick return on investment when replacing the lighting.

TECHNICAL DATA

Light sources	LEDs SMD ²⁸³⁵
Power consumption	30W - 40W
Luminous flux of the luminaire	129±5%LM/W
Luminous efficiency of the luminaire	5150±5%LM
Color temperature	4000 K
Color rendering index (CRI)	>80
Service life	>54000Hrs L70B50
Working temperature	+5°C - +35°C
Body	Steel, PC
Color	White, powder coating
Iris	Microprisma
Tightness class	IP44
Weight	3 kg
Supply voltage	220-240V
Frequency	50-60Hz
Warranty	5 years with the possibility of extension
Control systems	on/off, intelligent AI Sensor

PRODUCTS GROUP

Catalog number	Name	Control	Luminaire power	Luminous flux of the luminaire	Luminous efficiency of the luminaire	Color rendering index
LL01-PA005-040-101R	Lars Smart Panel LED		40 W	4000±5%LM	100±5%LM/W	>80
LL01-PA005-040-101D	Lars Smart Panel LED	●	40 W	4000±5%LM	100±5%LM/W	>80
LL01-PA006-040-101R	Lars Smart Panel LED		40 W	5150±5%LM	129±5%LM/W	>80
LL01-PA006-040-101D	Lars Smart Panel LED	●	40 W	5150±5%LM	129±5%LM/W	>80

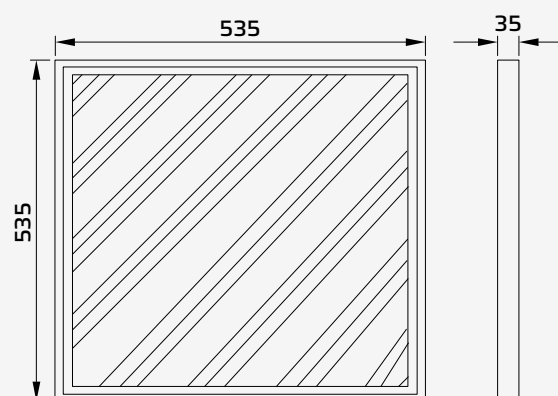
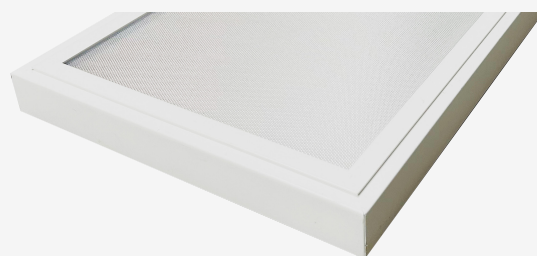
ADVANTAGES

- Save up to 93% on electricity costs
- Limit unnecessary lighting
- Take care of the safety of guests and employees
- Reduce maintenance costs
- Modern design and solid workmanship
- Very good lighting for monitoring
- Polish product

PRODUCT USE:

- office rooms
- school classes
- social rooms
- passageways
- halls and open spaces

DIMENSIONS [MM]



Lars Lighting Sp. z o.o.
St. Zygmunta Vogla 8,
02-963 Warsaw
POLAND

office@larslighting.com
www.larslighting.com



When developing Lars Lighting **SMART PANEL Long**, we put **technical aspects and component quality first**. We wanted the luminaire to have a simple design and construction that meets market standards. Therefore, to increase protection against overheating of the diodes, the luminaire has separate chambers for the power supply and the LED module. Maintenance issues are extremely important to us, which is why the luminaire has an easy opening system and tool-free access to the power supply chamber, which significantly facilitates its possible servicing. Additionally, SMART PANEL Long LED gives the user the possibility of integrating with any intelligent control network, thus maximizing savings, all using the best quality components. Therefore, SMART PANEL Long LED is a **solution that guarantees excellent quality light, as well as significant savings for the local budget and an increase in the quality and comfort of employees work and a quick return on investment when replacing the lighting.**

TECHNICAL DATA

Light sources	diody LED SMD ²⁸³⁵
Power consumption	40W
Luminous flux of the luminaire	4970±5%LM
Luminous efficiency of the luminaire	124±5%LM/W
Color temperature	4000 K
Color rendering index (CRI)	>80
Service life	>54000Hrs L70B50
Working temperature	+5°C - +35°C
Body	Stal, PC
Color	White, powder coating
Iris	Microprisma
Tightness class	IP44
Weight	3,1 kg
Supply voltage	220-240V
Frequency	50-60Hz
Warranty	5 lat z możliwością przedłużenia
Control systems	on/off, inteligentny Czujnik AI

PRODUCTS GROUP

Catalog number	Name	Control	Luminaire power	Luminous flux of the luminaire	Luminous efficiency of the luminaire	Color rendering index
LL01-PA008-040-101R	Lars Smart Panel Long		40 W	4970±5%LM	124±5%LM/W	>80
LL01-PA008-040-101D	Lars Smart Panel Long	●	40 W	4970±5%LM	124±5%LM/W	>80
LL01-PA007-040-101R	Lars Smart Panel Long		40 W	4215±5%LM	105±5%LM/W	>80
LL01-PA007-040-101D	Lars Smart Panel Long	●	40 W	4215±5%LM	105±5%LM/W	>80

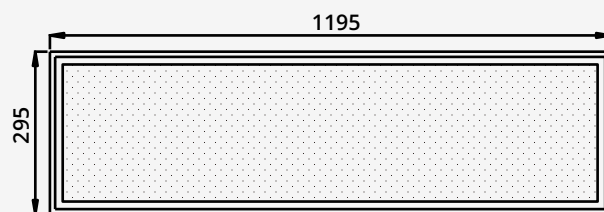
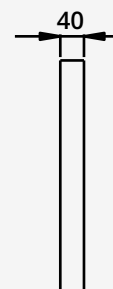
ADVANTAGES

- Save up to 93% on electricity costs
- Limit unnecessary lighting
- Take care of the safety of guests and employees
- Reduce maintenance costs
- Modern design and solid workmanship
- Very good lighting for monitoring
- Polish product

PRODUCT USE:

- office rooms
- school classes
- social rooms
- passageways
- halls and open spaces

DIMENSIONS [MM]



Lars Lighting Sp. z o.o.
St. Zygmunta Vogla 8,
02-963 Warsaw
POLAND

office@larslighting.com
www.larslighting.com



The energy-saving linear luminaire **Lars Lighting** is a perfect solution for those who are looking for **effective and ecological lighting methods**. Thanks to the use of the latest LED technologies, this luminaire provides **significant energy savings while maintaining high light quality**. Its innovative design makes it perfect for various types of spaces, from offices to production halls. In addition, the long life of the LEDs and the **high durability** of the structure make the Lars Lighting linear fixture not only an economical but also a long-term lighting solution.

TECHNICAL DATA

Light sources	LEDs SMD
Power consumption	40W±5%
Luminous flux of the luminaire	5000±5%LM (4000K, przesłona MPRM UGR<19) 5920±5%LM (4000K, przesłona MPRM) 5720±5%LM (4000K, przesłona mleczna)
Luminous efficiency of the luminaire	125±5%LM/W (4000K, MPRM Iris UGR<19) 143±5%LM/W (4000K, MPRM Iris) 148±5%LM/W (4000K, Milky Iris)
Color temperature	3000 K, 4000 K
Color rendering index (CRI)	>80
Service life	>85000Hrs L80B20
Working temperature	+5°C - +35°C
Body	Aluminium, PC
Color	black (RAL 9005A), grafit (RAL7016), silver (RAL9006), white(RAL9016)
Iris	MPRM (UGR<19), MPRM, OPAL
Tightness class	IP20
Weight	1,94±0,2 kg
Supply voltage	220-240V
Frequency	50-60Hz
Warranty	5 years with the possibility of extension
Control systems	on/off, 1-10V dim. intelligent AI Sensor

PRODUCTS GROUP

Catalog number	Name	Control	Luminaire power	Luminous flux of the luminaire	Luminous efficiency of the luminaire	Color rendering index
LL04-LE012-040-601R	Lars Linear LED Light		40 W	The flux and effectiveness depend on the type of diaphragm		>80
LL04-LE012-040-601D	Lars Linear LED Light	●	40 W	The flux and effectiveness depend on the type of diaphragm		>80
LL04-LE012-040-601C	Lars Linear LED Light		40 W	The flux and effectiveness depend on the type of diaphragm		>80

The luminaire with the intelligent sensor is approx. 8cm longer

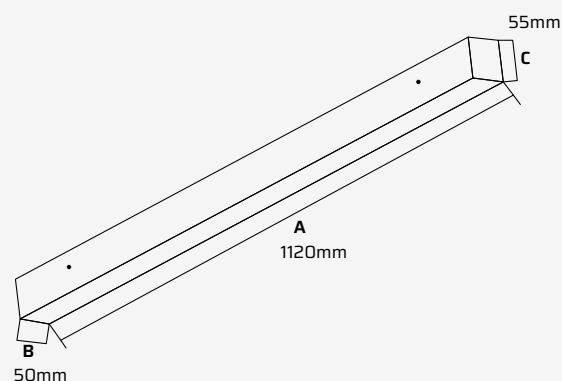
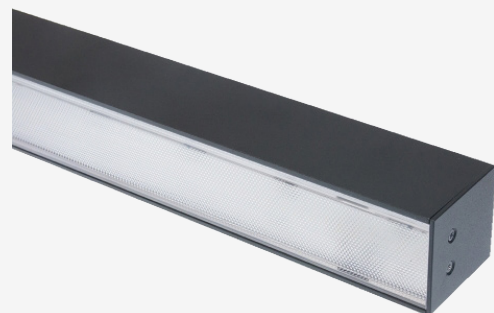
ADVANTAGES

- Save up to 93% on electricity costs
- Limit unnecessary lighting
- Take care of the safety of guests and employees
- Reduce maintenance costs
- Modern design and solid workmanship
- Very good lighting for monitoring
- Polish product

PRODUCT USE:

- office rooms
- school classes
- social rooms
- passageways
- halls and open spaces

DIMENSIONS [MM]



Lars Lighting Sp. z o.o.
St. Zygmunta Vogla 8,
02-963 Warsaw
POLAND

office@larslighting.com
www.larslighting.com

LED CEILING LIGHT

ENERGY-SAVING LED OFFICE
LUMINAIRE



Housing with very **high tightness, resistant to difficult weather conditions** such as moisture or dust, very high impact resistance. Light source: SMD LEDs, variable light color temperature using 3000K, 4000K and 5700K switches, high color rendering index $Ra > 80$.

Attention!! The basic version uses a power supply with a 1-10V control input, which allows you to adjust the light power using dedicated motion sensors with a dimming function.

The ceiling lamps can be available in an on/off version or **with an intelligent motion sensor** with dimming and twilight functions, as well as adjustment of the light intensity after detecting movement. If an intelligent motion sensor is used, it is possible to remotely adjust all settings using an IR remote control. Mounting accessories made of stainless steel.

TECHNICAL DATA

Light sources	LEDs SMD ²⁸³⁵
Power consumption	14W±5%, 19W±5%
Luminous flux of the luminaire	1395LM 1925LM
Luminous efficiency of the luminaire	100LM/W, 101LM/W
Light distribution angle	120°
Color temperature	3000K, 4000 K, 5700K
Color rendering index (CRI)	>80
Service life	>50000Hrs L90B10
Working temperature	-20°C - +40°C
Body	PC
Color	White
Iris	PC - Milky
Tightness class	IP20
Weight	1,2 kg
Supply voltage	220-240V
Frequency	50-60Hz
Warranty	5 lat z możliwością przedłużenia
Control systems	on/off, funkcja ściemniania 1-10V, inteligentny Czujnik AI

PRODUCTS GROUP

Catalog number	Name	Control	Luminaire power	Luminous flux of the luminaire	Luminous efficiency of the luminaire	Color rendering index
LL01-CLO03-030-301D	Lars Ceiling LED Light	●	14W±5%	1395LM	100LM/W	>80
LL04-LE012-040-601D	Lars Ceiling LED Light	●	19W±5%	1925LM	101LM/W	>80

ADVANTAGES

- Save up to 93% on electricity costs
- Limit unnecessary lighting
- Take care of the safety of guests and employees
- Reduce maintenance costs
- Modern design and solid workmanship
- Very good lighting for monitoring
- Polish product

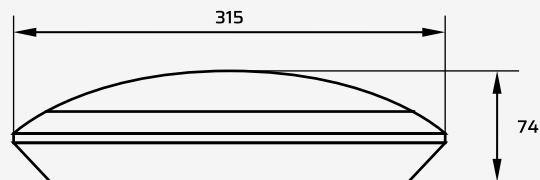
PRODUCT USE:

- social and sanitary rooms
- corridors
- staircases
- building facades
- halls and open spaces

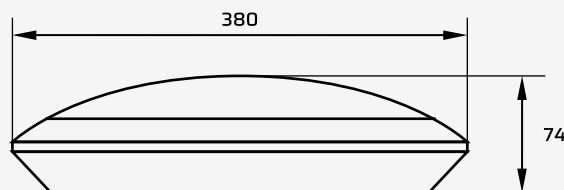
DIMENSIONS [MM]



Version 14W



Version 19W



Lars Lighting Sp. z o.o.
St. Zygmunta Vogla 8,
02-963 Warsaw
POLAND

office@larslighting.com
www.larslighting.com

LED DOWNLIGHT SPOT

ENERGY-SAVING LED OFFICE
LUMINAIRE



High-quality downlight luminaires based on components from the renowned manufacturer Tridonic. Luminaires suitable for installation in suspended plasterboard ceilings or "cassette" system ceilings. **For optimal optical and energy matching, reflectors with focusing angles of 60° and 90° are available.** The light beam from this type of fixture is almost perfect, it is evenly distributed without creating any penumbra.

TECHNICAL DATA

Light sources	LEDs
Power consumption	10W, 20W, 30W
Luminous flux of the luminaire	1000LM, 2000LM, 3000LM
Luminous efficiency of the luminaire	100LM/W
Light distribution angle	60°, 90°
Color temperature	4000 K
Color rendering index (CRI)	>80
Service life	>50000Hrs L80B50
Working temperature	-20°C - +40°C
Body	Aluminium, PC
Color	White
Iris	PC
Tightness class	IP44 bottom and IP20 ceiling
Weight	0,4 kg, 0,5 kg, 0,6 kg
Supply voltage	220-240V
Frequency	50-60Hz
Warranty	5 years with the possibility of extension
Control systems	on/off, 1-10V dimming function, AI intelligent sensor

PRODUCTS GROUP

Catalog number	Name	Control	Luminaire power	Luminous flux of the luminaire	Luminous efficiency of the luminaire	Color rendering index
LL02-DL011-010-504R	Lars Downlight Spot		10W±5%	1000±5%LM	100±5%LM/W	>80
LL02-DL011-010-504D	Lars Downlight Spot	●	10W±5%	1000±5%LM	100±5%LM/W	>80
LL02-DL011-020-504R	Lars Downlight Spot		20W±5%	2000±5%LM	100±5%LM/W	>80
LL02-DL011-020-504D	Lars Downlight Spot	●	20W±5%	2000±5%LM	100±5%LM/W	>80
LL02-DL011-030-504R	Lars Downlight Spot		30W±5%	3000±5%LM	100±5%LM/W	>80
LL02-DL011-030-504D	Lars Downlight Spot	●	30W±5%	3000±5%LM	100±5%LM/W	>80

ADVANTAGES

- Save **up to 93%** on electricity costs
- Limit unnecessary lighting
- Take care of the safety of guests and employees
- Reduce maintenance costs
- Modern design and solid workmanship
- Very good lighting for monitoring
- Polish product

PRODUCT USE:

- flat surfaces
- corridors
- commercial and office spaces
- sanitary spaces
- halls and open spaces

DIMENSIONS [MM]



10W - Ø120x115mm

„100mm”: mounting hole ø100-108mm

20W - Ø170x126mm

„150mm”: mounting hole ø145-158mm

30W - Ø222x135mm

„200mm”: mounting hole ø190-210mm

REFLECTORS



Lars Lighting Sp. z o.o.
St. Zygmunta Vogla 8,
02-963 Warsaw
POLAND

office@larslighting.com
www.larslighting.com

LED

SMART Hermetic 60

ENERGY SAVING INDUSTRIAL
LED LUMINAIRES



Durable hermetic linear industrial LED luminaires. The body is made of PC with a "frozen" PC cover for operation in difficult conditions. The "frozen" or "milky" lampshade effectively reduces glare from LED light. They can be equipped with an **intelligent control system**, a motion sensor with dimming function, normal and reduced lighting mode, adjustable twilight sensor, changing parameters using a microswitch or remote control. Intended, among other things, to illuminate interiors and exterior areas with high humidity and dust.

TECHNICAL DATA

Light sources	LED SMD ²⁸³⁵
Power consumption	24W±5%
Luminous flux of the luminaire	3300LM, 3520LM
Luminous efficiency of the luminaire	138LM/W, 147LM/W
Color temperature	4000 K, 5000 K
Color rendering index (CRI)	>80
Service life	>50000Hrs L80B10
Working temperature	-25°C - +50°C
Body	PC
Color	Cream
Iris	Milky, Frozen
Tightness class	IP65
Degree of impact protection	IK08
Weight	1,2 kg
Supply voltage	220-240V
Frequency	50-60Hz
Warranty	5 years with the possibility of extension
Control systems	on-off, 0-10V dim, dusk sensor

PRODUCTS GROUP

Catalog number	Name	Control	Luminaire power	Luminous flux of the luminaire	Luminous efficiency of the luminaire	Color rendering index
LL01-TP002-030-301R	Lars Smart Hermetic Milky		30 W	3300LM	138LM/W	>80
LL01-TP002-030-301D	Lars Smart Hermetic Milky	●	30 W	3300LM	138LM/W	>80
LL01-TP001-030-301R	Lars Smart Hermetic Milky		30 W	3520LM	147LM/W	>80
LL01-TP001-030-301D	Lars Smart Hermetic Milky	●	30 W	3520LM	147LM/W	>80

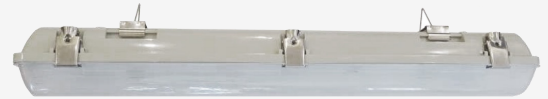
ADVANTAGES

- Save up to 93% on electricity costs
- Limit unnecessary lighting
- Take care of the safety of guests and employees
- Reduce maintenance costs
- Modern design and solid workmanship
- Very good lighting for monitoring
- Polish product

PRODUCT USE:

- external and internal areas with high humidity and dust
- warehouses and industrial halls
- workshop rooms
- storage sheds, roofs, garages
- back of shopping centers
- gymnasiums, tennis courts, sports halls

DIMENSIONS [MM]



130



665

95



Lars Lighting Sp. z o.o.
St. Zygmunta Vogla 8,
02-963 Warsaw
POLAND

office@larslighting.com
www.larslighting.com

LED

SMART Hermetic 120

ENERGY SAVING INDUSTRIAL
LED LUMINAIRES



Durable hermetic linear industrial LED luminaires. The body is made of PC with a "frozen" PC cover for operation in difficult conditions. The "frozen" or "milky" lampshade effectively reduces glare from LED light. They can be equipped with an **intelligent control system**, a motion sensor with dimming function, normal and reduced lighting mode, adjustable twilight sensor, changing parameters using a microswitch or remote control. Intended, among other things, to illuminate interiors and exterior areas with high humidity and dust.

TECHNICAL DATA

Light sources	LED SMD ²⁸³⁵
Power consumption	40W
Luminous flux of the luminaire	5600LM, 5895LM
Luminous efficiency of the luminaire	140LM/W, 147LM/W
Color temperature	4000 K, 5000 K
Color rendering index (CRI)	>80
Service life	>50000Hrs L80B10
Working temperature	-25°C - +50°C
Body	PC
Color	Cream
Iris	Milky, Frozen
Tightness class	IP65
Degree of impact protection	IK08
Weight	2,2 kg
Supply voltage	220-240V
Frequency	50-60Hz
Warranty	5 years with the possibility of extension
Control systems	on-off, 0-10V dim, dusk sensor

PRODUCTS GROUP

Catalog number	Name	Control	Luminaire power	Luminous flux of the luminaire	Luminous efficiency of the luminaire	Color rendering index
LL01-TP002-040-301R	Lars Smart Hermetic Mleczny		40 W	5600LM	140LM/W	>80
LL01-TP002-040-301D	Lars Smart Hermetic Mleczny	●	40 W	5600LM	140LM/W	>80
LL01-PA007-040-101R	Lars Smart Hermetic Mrożony		40 W	5895LM	147LM/W	>80
LL01-PA007-040-101D	Lars Smart Hermetic Mrożony	●	40 W	5895LM	147LM/W	>80

ADVANTAGES

- Save up to 93% on electricity costs
- Limit unnecessary lighting
- Take care of the safety of guests and employees
- Reduce maintenance costs
- Modern design and solid workmanship
- Very good lighting for monitoring
- Polish product

PRODUCT USE:

- external and internal areas with high humidity and dust
- warehouses and industrial halls
- workshop rooms
- storage sheds, roofs, garages
- back of shopping centers
- gymnasiums, tennis courts, sports halls

DIMENSIONS [MM]



130



1265

95



LARS
LIGHTING

Lars Lighting Sp. z o.o.
St. Zygmunta Vogla 8,
02-963 Warsaw
POLAND

office@larslighting.com
www.larslighting.com

LED HIGH BAY RING

ENERGY SAVING INDUSTRIAL
LED LUMINAIRES



Durable **hermetic industrial LED luminaires**, body made of aluminum with a PC lampshade with 60°, 90°, 120° lenses for work in difficult conditions.

Note: the heat sink used in the fixtures is designed for a power of 200W, but in fact it works with a power of 150W, which obviously improves the thermal conditions of the LED diodes.

They can be equipped with an intelligent control system, a motion sensor with dimming function, normal and reduced lighting mode, adjustable twilight sensor, changing parameters using a microswitch or remote control.

TECHNICAL DATA

Light sources	LEDs, Hongli, Lumileds
Power consumption	80W, 100W, 150W, 200W
Luminous flux of the luminaire	12920±5% - 31200±5% LM
Light distribution angle	60°, 90°, 120°
Luminous efficiency of the luminaire	148±5%, 152±5%, 158±5%, 160±5% LM/W
Color temperature	4000 K, 5000 K
Color rendering index (CRI)	>80
Service life	84 000Hrs (L80B10)
Working temperature	-40°C - +50°C
Body	Aluminium
Color	Black
Installation	Surface-mounted or suspended
Glass	PC
Tightness class	IP65
Degree of impact protection	IK08
Weight	80W, 100W, 150W - 2,3kg / 200W- 3,0kg
Supply voltage	220-240V
Frequency	50/60Hz
Warranty	5 years with the possibility of extension
Control systems	on-off, 0-10V dim, dusk sensor

PRODUCTS GROUP

Catalog number	Name	Control	Luminaire power	Luminous flux of the luminaire	Luminous efficiency of the luminaire	Color rendering index
LL02-HB009-080-202D	Lars High Bay Ring	●	80W	13 430LM	158±5%LM/W	>80
LL02-HB009-100-202D	Lars High Bay Ring	●	100W	15 800LM	158±5%LM/W	>80
LL02-HB009-150-202D	Lars High Bay Ring	●	150W	30 400LM	153±5%LM/W	>80
LL02-HB009-200-202D	Lars High Bay Ring	●	200W	22 960 LM	152±5%LM/W	>80

*The given luminous fluxes and luminaire efficiencies apply to 90° lenses

ADVANTAGES

- power up to 200 W
- service life up to 100,000 h (L80B10)
- tempered glass
- adjustable handle
- resistance to high temperatures
- possibility of adaptation to any control system
- three mounting methods (on a handle, on cables, single-point)
- a wide range of power and lighting angles
- modern design and solid workmanship
- versatile use
- Polish product

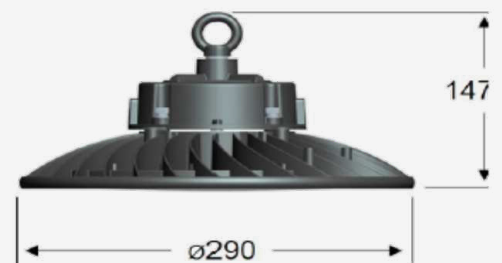
PRODUCT USE:

- production halls, foundries, steelworks
- warehouses
- logistics centers
- airports and stations
- maneuvering areas
- sports facilities: gyms, tennis courts, sports halls
- lighting of buildings, parking lots and advertisements
- lighting of squares and intersections
- ski slopes

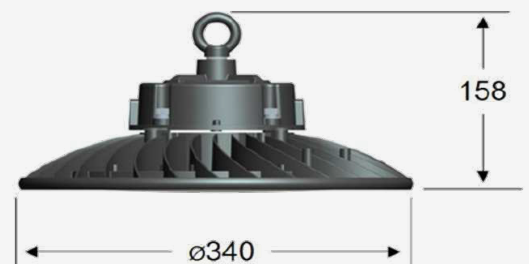
DIMENSIONS [MM]



Version 80, 100, 150 W



Version 200 W

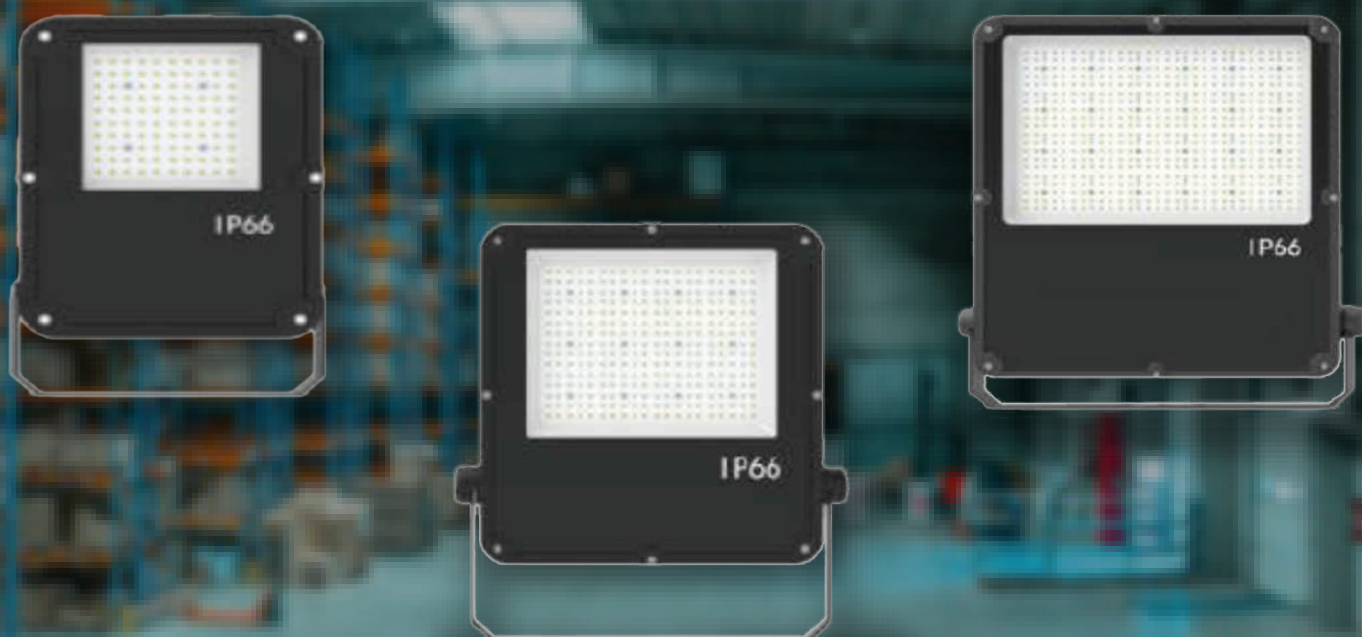


Lars Lighting Sp. z o.o.
St. Zygmunta Vogla 8,
02-963 Warsaw
POLAND

office@larslighting.com
www.larslighting.com

LED FLOOD LIGHT

ENERGY SAVING INDUSTRIAL
LED LUMINAIRES



Energy-saving industrial floodlights that are not only extremely effective, but also provide excellent lighting in various types of industrial and outdoor spaces. Thanks to the use of the latest LED technologies and innovative design solutions, **Lars Lighting products allow for a significant reduction in electricity consumption while maintaining high quality of lighting.** In addition to energy savings, Lars Lighting floodlights are also characterized by long service life and reliability, which makes them an excellent choice for companies seeking to optimize operating costs and at the same time care for the natural environment.

TECHNICAL DATA

Light sources	Lumileds LEDs
Power consumption	50W - 300W
Light distribution angle	30°, 60°, 90°, 120°, 2TM, 3TM
Color temperature	3000K, 4000K, 5000K, 5700K
Color rendering index (CRI)	>70
Service life	>50 000Hrs (L70B50)
Working temperature	-30°C - +45°C
Body	Aluminium, PC
Glass	Tempered glass
Color	Black
Installation	Surface-mounted or suspended
Tightness class	IP66
Degree of impact protection	IK08
Weight	1,7kg - 8,5kg
Supply voltage	100-277V
Frequency	50/60Hz
Warranty	5 years with the possibility of extension
Control systems	on-off, 0-10V dim, dusk sensor

PRODUCTS GROUP

Catalog number	Name	Control	Luminaire power	Luminous flux of the luminaire	Luminous efficiency of the luminaire	Color rendering index
LL03-FL015-50-203C	Lars Flood Light		50W	7 997 LM	160±5%LM/W	>70
LL03-FL015-50-203R	Lars Flood Light	●	50W	7 997 LM	160±5%LM/W	>70
LL03-FL015-150-203C	Lars Flood Light		150W	76 960 LM	160±5%LM/W	>70
LL03-FL015-150-203R	Lars Flood Light	●	150W	76 960 LM	160±5%LM/W	>70
LL03-FL015-300-203C	Lars Flood Light		300W	23 986 LM	159±5%LM/W	>70
LL03-FL015-300-203R	Lars Flood Light	●	300W	47 773 LM	159±5%LM/W	>70

*The given luminous fluxes and luminaire efficiencies apply to 90° lenses

ADVANTAGES

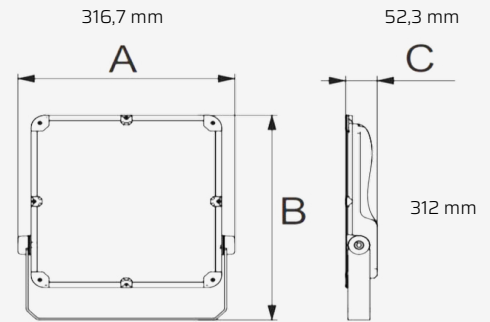
- power up to 300 W
- service life over 50,000 hours
- resistance to high temperatures
- possibility of adaptation to the control system
- three mounting methods (on a handle, on a surface)
- a wide range of power and lighting angles
- modern design and solid workmanship
- versatile use
- Polish product

PRODUCT USE:

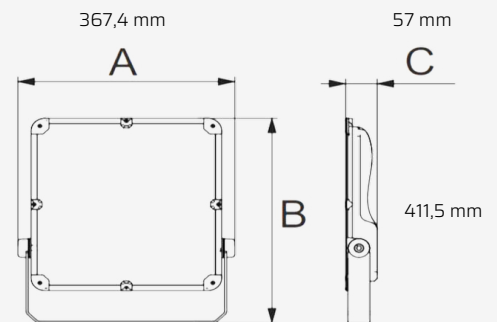
- production halls, foundries, steelworks
- warehouses
- logistics centers
- airports and stations
- maneuvering areas
- sports facilities: gyms, tennis courts, sports halls
- lighting of buildings, parking lots and advertisements banners
- lighting of squares and intersections
- ski slopes

DIMENSIONS [MM]

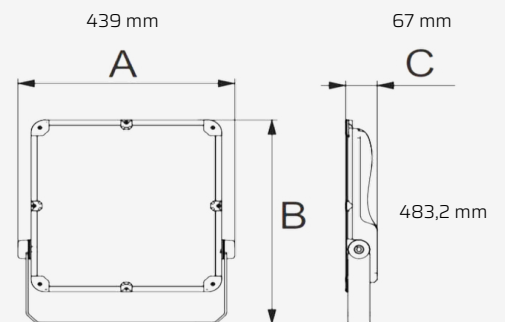
LL03-FL015-50-203R LL03-FL015-50-203C



LL03-FL015-150-203R LL03-FL015-150-203C



LL03-FL015-300-203R LL03-FL015-300-203C

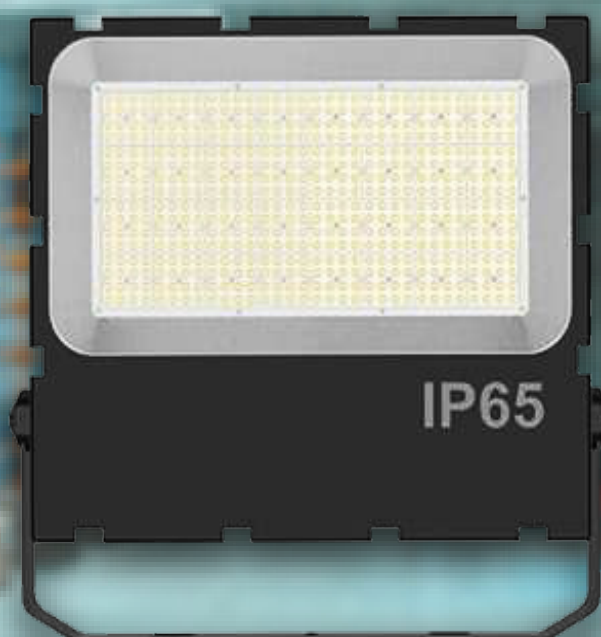


Lars Lighting Sp. z o.o.
St. Zygmunta Vogla 8,
02-963 Warsaw
POLAND

office@larslighting.com
www.larslighting.com

LED FLOOD LIGHT

ENERGY SAVING INDUSTRIAL
LED LUMINAIRES



Energy-saving industrial floodlights that are not only extremely effective, but also provide excellent lighting in various types of industrial and outdoor spaces. Thanks to the use of the latest LED technologies and innovative design solutions, **Lars Lighting products allow for a significant reduction in electricity consumption** while maintaining high quality of lighting. In addition to energy savings, Lars Lighting floodlights are also characterized by **long service life and reliability**, which makes them an excellent choice for companies seeking to optimize operating costs and at the same time care for the natural environment.

TECHNICAL DATA

Light sources	Lumileds LEDs
Power consumption	400W
Light distribution angle	30°, 60°, 90°, 120°, 2TM, 3TM
Color temperature	3000K, 4000K, 5000K, 5700K
Color rendering index (CRI)	>70
Service life	>50 000Hrs (L70B50)
Working temperature	-30°C - +45°C
Body	Aluminium, PC
Glass	Tempered glass
Color	Black
Installation	Surface-mounted or suspended
Tightness class	IP65
Degree of impact protection	IK08
Weight	18kg±0,2kg
Supply voltage	100-277V
Frequency	50/60Hz
Warranty	5 years with the possibility of extension
Control systems	on-off, 0-10V dim, dusk sensor

PRODUCTS GROUP

LL03-FL015-400-203C	Lars Flood Light		400W	61 765 LM	154±5%LM/W	>70
LL03-FL015-400-203R	Lars Flood Light	●	400W	61 765 LM	154±5%LM/W	>70

*The given luminous fluxes and luminaire efficiencies apply to 90° lenses

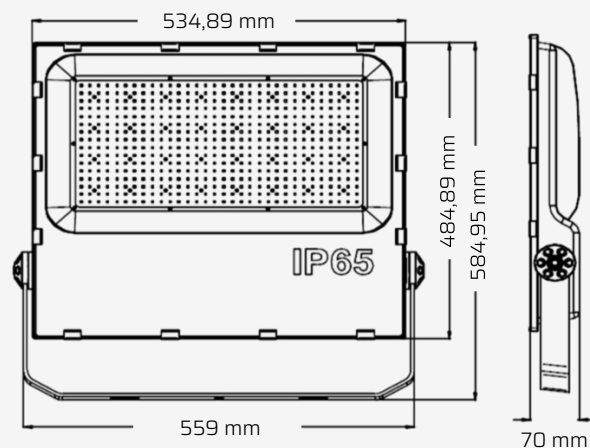
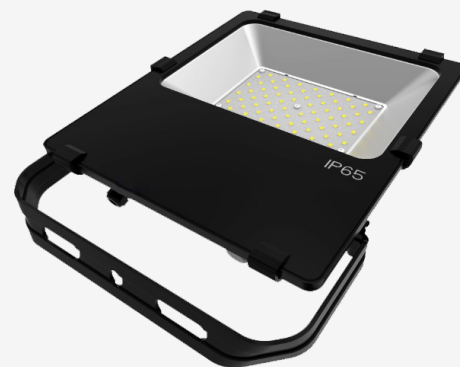
ADVANTAGES

- power 400 W
- service life over 50,000 hours
- resistance to high temperatures
- possibility of adaptation to the control system
- three mounting methods (on a handle, on a surface)
- a wide range of power and lighting angles
- modern design and solid workmanship
- versatile use
- Polish product

PRODUCT USE:

- production halls, foundries, steelworks
- warehouses
- logistics centers
- airports and stations
- maneuvering areas
- sports facilities: gyms, tennis courts, sports halls
- lighting of buildings, parking lots and advertisements banners
- lighting of squares and intersections
- ski slopes

DIMENSIONS [MM]



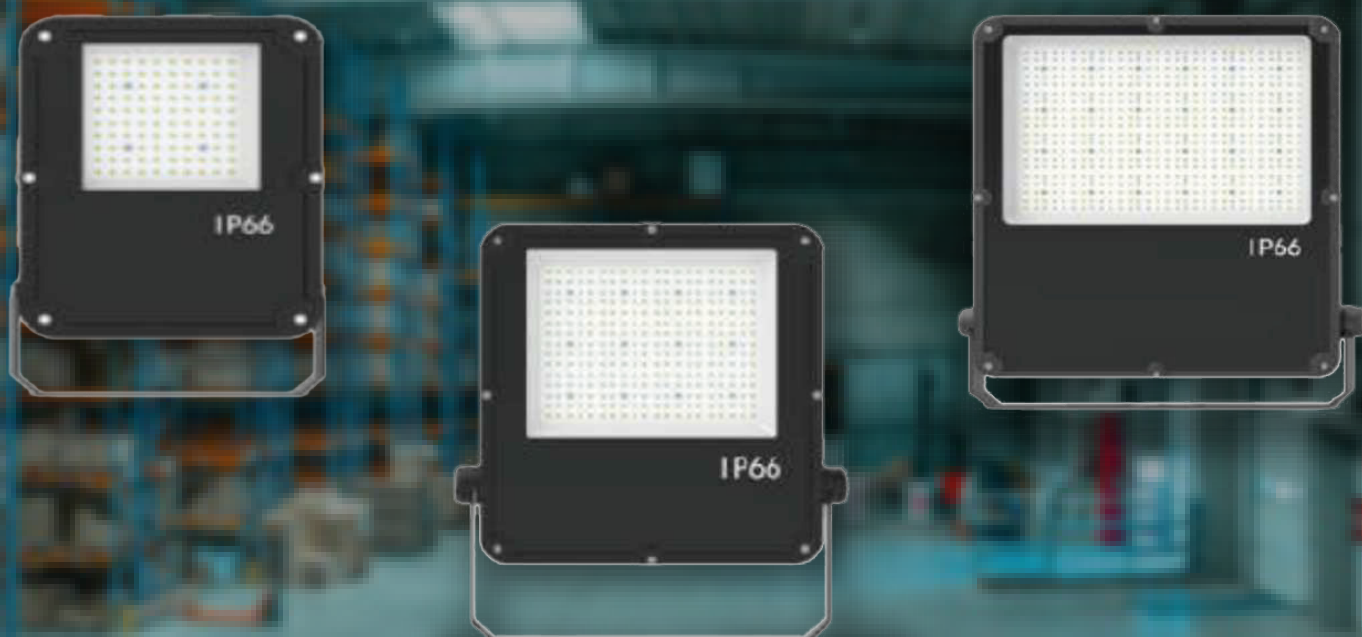
LARS
LIGHTING

Lars Lighting Sp. z o.o.
St. Zygmunta Vogla 8,
02-963 Warsaw
POLAND

office@larslighting.com
www.larslighting.com

LED FLOOD LIGHT

ENERGY SAVING INDUSTRIAL
LED LUMINAIRES



Energy-saving industrial floodlights that are not only extremely effective, but also provide excellent lighting in various types of industrial and outdoor spaces. Thanks to the use of the latest LED technologies and innovative design solutions, **Lars Lighting products allow for a significant reduction in electricity consumption** while maintaining high quality of lighting. In addition to energy savings, Lars Lighting floodlights are also characterized by **long service life and reliability**, which makes them an excellent choice for companies seeking to optimize operating costs and at the same time care for the natural environment.

TECHNICAL DATA

Light sources	diody LED Lumileds
Power consumption	50W - 300W
Light distribution angle	30°, 60°, 90°, 120°, 2TM, 3TM, P45
Color temperature	3000K, 4000K, 5000K, 5700K
Color rendering index (CRI)	>70
Service life	>50 000Hrs (L70B50)
Working temperature	-30°C - +45°C
Body	Aluminium, PC
Glass	Tempered glass
Color	Black
Installation	Surface-mounted or suspended
Tightness class	IP66
Degree of impact protection	IK08
Weight	1,7kg - 8,5kg
Supply voltage	100-277V
Frequency	50/60Hz
Warranty	5 years with the possibility of extension
Control systems	on-off, 0-10V dim, dusk sensor

PRODUCTS GROUP

Catalog number	Name	Control	Luminaire power	Luminous flux of the luminaire	Luminous efficiency of the luminaire	Color rendering index
LL03-FL016-50-203C	Lars Flood Light		50W	8 892 LM	178±5%LM/W	>70
LL03-FL016-50-203R	Lars Flood Light	●	50W	8 892 LM	178±5%LM/W	>70
LL03-FL016-150-203C	Lars Flood Light		150W	26 484 LM	177±5%LM/W	>70
LL03-FL016-150-203R	Lars Flood Light	●	150W	26 484 LM	177±5%LM/W	>70
LL03-FL016-300-203C	Lars Flood Light		300W	52 471 LM	175±5%LM/W	>70
LL03-FL016-300-203R	Lars Flood Light	●	300W	52 471 LM	175±5%LM/W	>70

*The given luminous fluxes and efficiencies of the luminaire apply to 90° lenses

ADVANTAGES

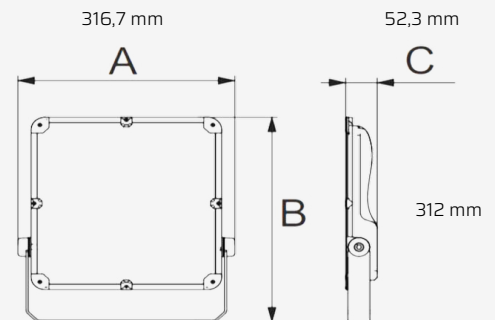
- power up to 300 W
- service life over 50,000 hours
- resistance to high temperatures
- possibility of adaptation to the control system
- three mounting methods (on a handle, on a surface)
- a wide range of power and lighting angles
- modern design and solid workmanship
- versatile use
- Polish product

PRODUCT USE:

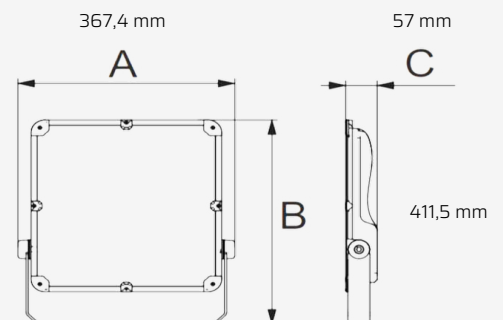
- production halls, foundries, steelworks
- warehouses
- logistics centers
- airports and stations
- maneuvering areas
- sports facilities: gyms, tennis courts, sports halls
- lighting of buildings, parking lots and advertisements banners
- lighting of squares and intersections
- ski slopes

DIMENSIONS [MM]

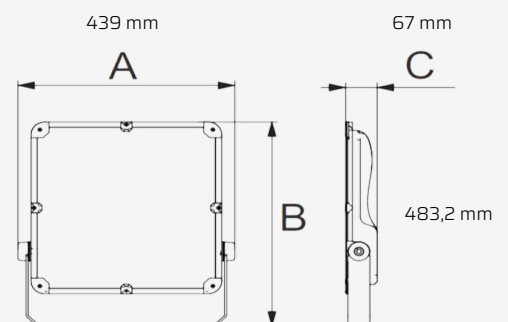
LL03-FL016-50-203R LL03-FL016-50-203C



LL03-FL016-150-203R LL03-FL016-150-203C



LL03-FL016-300-203R LL03-FL016-300-203C



Lars Lighting Sp. z o.o.
St. Zygmunta Vogla 8,
02-963 Warsaw
POLAND

office@larslighting.com
www.larslighting.com

LED FLOOD LIGHT

ENERGY SAVING INDUSTRIAL
LED LUMINAIRES



Energy-saving industrial floodlights that are not only extremely effective, but also provide excellent lighting in various types of industrial and outdoor spaces. Thanks to the use of the latest LED technologies and innovative design solutions, **Lars Lighting products allow for a significant reduction in electricity consumption** while maintaining high quality of lighting. In addition to energy savings, Lars Lighting floodlights are also characterized by **long service life and reliability**, which makes them an excellent choice for companies seeking to optimize operating costs and at the same time care for the natural environment.

TECHNICAL DATA

Light sources	diody LED Lumileds
Power consumption	400W
Light distribution angle	30°,60°,90°,120°,2TM, 3TM, P45
Color temperature	3000K, 4000K, 5000K, 5700K
Color rendering index (CRI)	>70
Service life	>50 000Hrs (L70B50)
Working temperature	-30°C - +45°C
Body	Aluminium, PC
Glass	Tempered glass
Color	Black
Installation	Surface-mounted or suspended
Tightness class	IP65
Degree of impact protection	IK08
Weight	18kg±0,2kg
Supply voltage	100-277V
Frequency	50/60Hz
Warranty	5 years with the possibility of extension
Control systems	on-off, 0-10V dim, dusk sensor

PRODUCTS GROUP

Catalog number	Name	Control	Luminaire power	Luminous flux of the luminaire	Luminous efficiency of the luminaire	Color rendering index
LL03-FL016-400-203C	Lars Flood Light		400W	70 463 LM	176±5%LM/W	>70
LL03-FL016-400-203R	Lars Flood Light	●	400W	70 463 LM	176±5%LM/W	>70

*The given luminous fluxes and luminaire efficiencies apply to 90° lenses

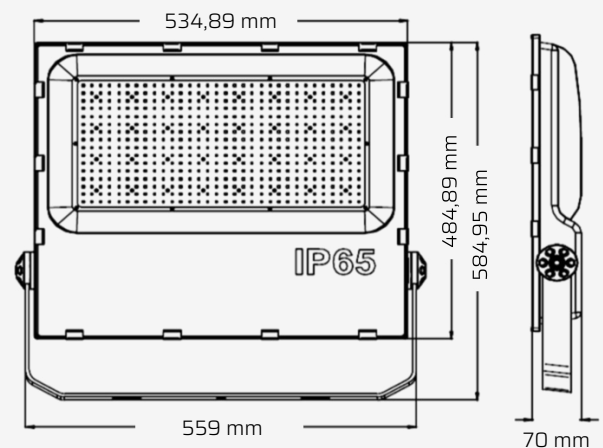
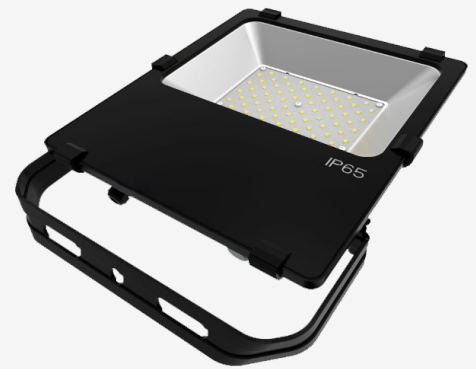
ADVANTAGES

- power 400 W
- service life over 50,000 hours
- resistance to high temperatures
- possibility of adaptation to the control system
- three mounting methods (on a handle, on a surface)
- a wide range of power and lighting angles
- modern design and solid workmanship
- versatile use
- Polish product

PRODUCT USE:

- production halls, foundries, steelworks
- warehouses
- logistics centers
- airports and stations
- maneuvering areas
- sports facilities: gyms, tennis courts, sports halls
- lighting of buildings, parking lots and advertisements banners
- lighting of squares and intersections
- ski slopes

DIMENSIONS [MM]



Lars Lighting Sp. z o.o.
St. Zygmunta Vogla 8,
02-963 Warsaw
POLAND

office@larslighting.com
www.larslighting.com



The economical linear High-Bay by Lars Lighting is a perfect solution for **industrial and warehouse spaces** with high ceilings. Thanks to modern LED technology and intelligent energy control, these luminaires provide excellent lighting with minimal energy consumption. High-Bay models from Lars Lighting are characterized not only by **high light efficiency, but also by durability and reliability**, which translates into significant savings in both operating and maintenance costs. Their ergonomic design and the ability to adapt to various installation conditions make them an ideal choice for companies looking for effective and economical lighting solutions.

TECHNICAL DATA

Light sources	LEDs Lumileds ²⁸³⁵
Power consumption	50W - 500W
Light distribution angle	40°x100°,60°x120°,90°x130°, P55
Color temperature	3000K, 4000K, 5000K, 5700K
Color rendering index (CRI)	>70
Service life	>50 000Hrs (L90B10)
Working temperature	-40°C - +45°C
Body	Aluminium, PC
Color	Black-Red, White
Installation	Surface-mounted or suspended
Tightness class	IP65
Degree of impact protection	IK10
Weight	50W - 2,6kg, 240W - 7,2kg,
Supply voltage	100-277V
Frequency	50/60Hz
Warranty	5 years with the possibility of extension
Control systems	on-off, 0-10V dim, dusk sensor

PRODUCTS GROUP

Catalog number	Name	Control	Luminaire power	Luminous flux of the luminaire	Luminous efficiency of the luminaire	Color rendering index
LL03-LHB034-50-203R	Lars Linear Highbay		50W	7 848 LM	157±5%LM/W	>70
LL03-LHB034-50-203B	Lars Linear Highbay	●	50W	7 848 LM	157±5%LM/W	>70
LL03-LHB034-240-203R	Lars Linear Highbay		240W	37 188 LM	155±5%LM/W	>70
LL03-LHB034-240-203B	Lars Linear Highbay	●	240W	37 188 LM	155±5%LM/W	>70
LL03-LHB034-500-203R	Lars Linear Highbay		500W	76 960 LM	154±5%LM/W	>70
LL03-LHB034-500-203B	Lars Linear Highbay	●	500W	76 960 LM	154±5%LM/W	>70

*The given luminous fluxes and luminaire efficiencies apply to 60° lenses

ADVANTAGES

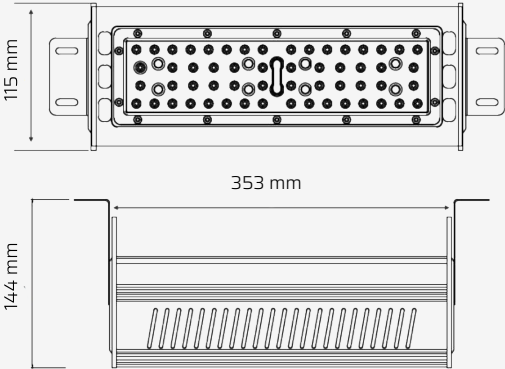
- power up to 500 W
- service life over 50,000 h (L90B10)
- resistance to high temperatures
- possibility of adaptation to the control system
- three mounting methods (on a handle, on cables, surface-mounted)
- a wide range of power and lighting angles
- modern design and solid workmanship
- versatile use
- Polish product

PRODUCT USE:

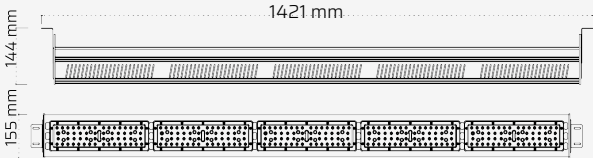
- production halls, foundries, steelworks
- warehouses
- logistics centers
- airports and stations
- maneuvering areas
- sports facilities: gyms, tennis courts, sports halls
- lighting of buildings, parking lots and advertisements
- lighting of squares and intersections
- ski slopes

DIMENSIONS [MM]

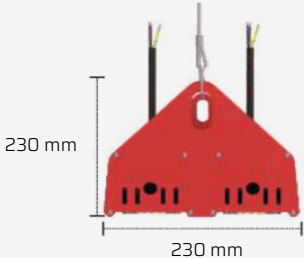
LL03-LHB034-50-203R
LL03-LHB034-50-203B



LL03-LHB034-240-203R
LL03-LHB034-240-203B



LL03-LHB034-500-203R
LL03-LHB034-500-203B



Lars Lighting Sp. z o.o.
St. Zygmunta Vogla 8,
02-963 Warsaw
POLAND

office@larslighting.com
www.larslighting.com



Lars Lighting SmartBeam is a luminaire that is perfect for both a production hall and a sports facility. The new version of this best-selling high-bay luminaire is equipped with tempered glass, which guarantees effective protection of the luminaire even in the most difficult conditions. Lars Lighting SmartBeam High Bay is characterized by high power and high luminous flux, but above all, excellent luminous efficiency, which translates into immediate savings. It is a two-chamber fixture in which the LEDs and the power supply are separated by a ribbed space, ensuring optimal air flow cooling both chambers. This solution guarantees the most efficient cooling of both heat sources of the luminaire and translates into its stable, **long-term operation even at very high ambient temperatures exceeding 50°C.**

TECHNICAL DATA

Light sources	LEDs
Power consumption	60 - 300W
Luminous flux of the luminaire	9000 - 39 900 LM
Luminous efficiency of the luminaire	132 - 160 LM/W
Color temperature	4000 K, 5700 K, other on request
Color rendering index (CRI)	70, 80
Service Life	100 000Hrs (L80B10)
Working temperature	-40°C - +55°C
Body	High pressure aluminum
Color	Anthracite, other colors on request
Lamp finish	Powder coating
Optics	PMMA
Glass	Tempered glass
Tightness class	IP67
Degree of impact protection	IK09
Weight	9 kg
Supply voltage	230V
Frequency	50Hz
Warranty	5 years with the possibility of extension
Control systems	on/off, intelligent AI Sensor

PRODUCTS GROUP

Catalog number	Name	Control	Luminaire power	Luminous flux of the luminaire	Luminous efficiency of the luminaire	Color rendering index
LL05-HB043-100-607D	LED Smart Beam 100W	●	100W	14 600 lm	146 lm/W	80
LL05-HB043-150-607D	LED Smart Beam 150W	●	150W	20 200 lm	135 lm/W	80
LL05-HB043-200-607D	LED Smart Beam 200W	●	200W	28 200 lm	141 lm/W	80
LL05-HB043-250-607D	LED Smart Beam 250W	●	250W	33 000 lm	132 lm/W	80

Przy zamówieniu proszę określić krzywą rozsyłu.

ADDITIONAL EQUIPMENT



ADJUSTABLE
MOUNTING BRACKET

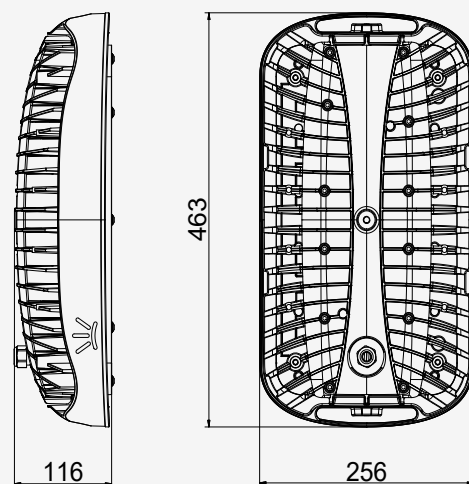
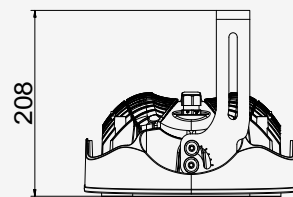


EYE BOLTS FOR
SUSPENDED MOUNTING

PRODUCT USE:

- production halls, foundries, steelworks
- warehouses
- logistics centers
- airports and stations
- maneuvering areas
- sports facilities: gyms, tennis courts, sports halls
- lighting of buildings, parking lots and advertisements
- lighting of squares and intersections
- ski slopes

DIMENSIONS [MM]



ADVANTAGES

- power up to 300 W
- service life up to 100,000 h (L80B10)
- tempered glass
- adjustable handle
- resistance to high temperatures
- possibility of adaptation to any control system
- three mounting methods (on a handle, on cables, single-point)
- a wide range of power and lighting angles
- modern design and solid workmanship
- versatile use
- Polish product



Lars Lighting Sp. z o.o.
St. Zygmunta Vogla 8,
02-963 Warsaw
POLAND

office@larslighting.com
www.larslighting.com



When developing **LED ROAD SMART**, we put technical aspects and component **quality first**. We wanted the luminaire to have a simple design and construction that meets market standards. Therefore, to increase protection against overheating of the diodes, the luminaire has separate chambers for the power supply and the LED module. The outer heat dissipation surface is made using flat radiator technology with a self-cleaning structure. The luminaire is also equipped with a filter that equalizes the pressure between the interior of the luminaire and the surroundings without sucking in air. Safety issues are extremely important to us, which is why the luminaire has a system that cuts off electricity when it is opened, while tool-free access to the power supply chamber significantly facilitates its possible servicing. Additionally, **LED ROAD SMART gives the user the possibility of integrating with any intelligent control network**, thus maximizing savings, all using the best quality components. Therefore, LED ROAD SMART is a solution that guarantees excellent quality light, as well as significant savings for the local budget and a quick return on investment when replacing the lighting.

TECHNICAL DATA

Light sources	LEDs
Power consumption	20 -80 W
Luminous flux of the luminaire	3 200-12 800 lm
Luminous efficiency of the luminaire	160 lm/W
Color temperature	3000 K, 4000 K
Color rendering index (CRI)	70
Service Life	100 000 h (L80B10)
Working temperature	-40 °C do +40 °C
Light distribution angle	Asymmetrical
Body	High pressure aluminum
Lamp finish	Powder coating
Color	Grey
Optics	PMMA
Glass	Tempered glass
Tightness class	IP66/IP67
Degree of impact protection	IK09
Weight	5,5 kg
Supply voltage	220-230 V
Frequency	50 Hz
Warranty	5 years with the possibility of extension
Control systems	on-off, 0-10V dim, dusk sensor

PRODUCTS GROUP

Catalog number	Name	Luminaire power	Luminous flux of the luminaire	Luminous efficiency of the luminaire	Color rendering index
LL05-ST049-020-607D	LED Road Smart 20	20 W	3 200 lm	160 lm/W	70
LL05-ST049-040-607D	LED Road Smart 40	40 W	6 300 lm	160 lm/W	70
LL05-ST049-060-607D	LED Road Smart 60	60 W	9 700 lm	160 lm/W	70
LL05-ST049-080-607D	LED Road Smart 80	80 W	12 800 lm	160 lm/W	70

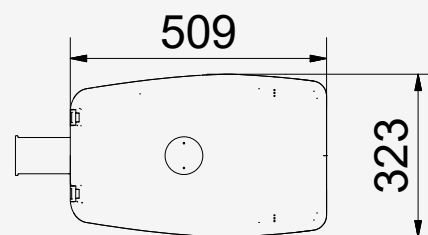
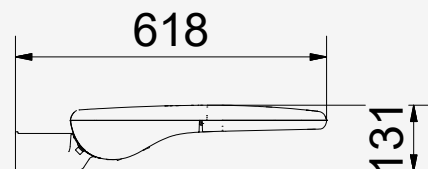
ADVANTAGES

- the structure and equipment of the luminaire meet the requirements of most built-up areas
- luminous efficiency of the luminaire is 160 lm/W
- service life up to 100,000h (L80B10)
- available in protection class I or II
- modern design and solid workmanship (IP66, IK09)
- possibility of adaptation to any control system (e.g. DALI, NEMA, ZHAGA socket)
- Polish product

PRODUCT USE:

- expressways
- commune, city and housing estate roads
- area lighting
- parking lots and maneuvering areas
- intersections and squares

DIMENSIONS [MM]



Lars Lighting Sp. z o.o.
St. Zygmunta Vogla 8,
02-963 Warsaw
POLAND

office@larslighting.com
www.larslighting.com

LED PARK LIGHT

ENERGY-SAVING LED PARK
LUMINAIRE



Lars Lighting "**LED Park Light**" park luminaires are an excellent lighting solution for parks, gardens and recreational areas. Available in a range of wattages, **from 30 to 150W**, these energy-efficient fixtures offer a wide range of options to suit your specific lighting needs. Made of high-quality aluminum, PC and tempered glass, they are resistant to weather conditions and mechanical damage, which makes them ideal for outdoor use. The control option allows for precise regulation of light intensity depending on lighting conditions and users' needs. The operating temperature range **from -40°C to +55°C** makes them suitable for extreme climatic conditions. Their impressive durability, exceeding 83,000 hours, guarantees long-term use without the need for frequent maintenance. Moreover, available in 4 different color temperatures and with different light distribution angles, they enable precise adjustment of the lighting to the specificity of a given area, ensuring a pleasant atmosphere and user safety.

TECHNICAL DATA

Light sources	LEDs Lumileds ²⁸³⁵
Power consumption	30 - 150W
Luminous flux of the luminaire	4923±5%LM - 21052±5%LM
Luminous efficiency of the luminaire	140±5%LM/W - 164±5%LM/W
Color temperature	3000K, 4000K, 5000K, 5700K
Color rendering index (CRI)	>70
Service life	>83 000h
Working temperature	-40°C - +55°C
Light distribution angle	Typ II, Typ III, Typ IV, Typ V
Body	Aluminium, PC
Color	Black
Glass	Tempered glass
Tightness class	IP66
Degree of impact protection	IK08
Weight	7,5±0,2kg
Supply voltage	AC 120-277V
Frequency	50/60 Hz
Warranty	5 years with the possibility of extension
Control systems	on-off, DALI, Nema 7pin, dusk sensor

PRODUCTS GROUP

Catalog number	Name	Control	Luminaire power	Luminous flux of the luminaire	Luminous efficiency of the luminaire	Color rendering index
LL03-PK036-030-203R	LED Park Light		30W	4 988 LM	166LM/W	>70
LL03-PK036-030-203A	LED Park Light	●	30W	4 988 LM	166LM/W	>70
LL03-PK036-040-203R	LED Park Light		40W	6 458 LM	161 LM/W	>70
LL03-PK036-040-203A	LED Park Light	●	40W	6 458 LM	161 LM/W	>70
LL03-PK036-080-203R	LED Park Light		80W	12 356 LM	154 LM/W	>70
LL03-PK036-080-203A	LED Park Light	●	80W	12 356 LM	154 LM/W	>70
LL03-PK036-100-203R	LED Park Light		100W	14 656 LM	147 LM/W	>70
LL03-PK036-100-203A	LED Park Light	●	100W	14 656 LM	147 LM/W	>70
LL03-PK036-120-203R	LED Park Light		120W	17 055 LM	142 LM/W	>70
LL03-PK036-120-203C	LED Park Light	●	120W	17 055 LM	142 LM/W	>70
LL03-PK036-150-203R	LED Park Light		150W	20 354 LM	136 LM/W	>70
LL03-PK036-150-203C	LED Park Light	●	150W	20 354 LM	136 LM/W	>70

The given beam angles and luminous fluxes refer to the Type II beam angle

ADVANTAGES

- power from 30 to 150 W
- service life up to 85,000 h
- tempered glass
- resistance to high temperatures
- possibility of adaptation to various control systems
- a wide range of power and lighting angles
- modern design and solid workmanship
- Polish product

PRODUCT USE:

- park lighting
- city and residential roads

DIMENSIONS [MM]



30W - 310x122x115mm

40W - 310x122x115mm

80W - 310x122x115mm

100W - 310x122x115mm

120W - 310x122x115mm

150W - 310x122x115mm

Pipe diameter - 60/80mm



Lars Lighting Sp. z o.o.
St. Zygmunta Vogla 8,
02-963 Warsaw
POLAND

office@larslighting.com
www.larslighting.com

LED STADIUM LIGHT

ENERGY-SAVING LED STADIUM
LUMINAIRES



Lars Lighting **LED stadium luminaires** with various power levels, **from 100 to 480 watts**, are an excellent lighting solution for various sports facilities. Made of high-quality aluminum and PC, they ensure durability and resistance to weather conditions. Thanks to the control option, you can adjust the light intensity to specific needs, which contributes to energy savings. The operating temperature range **from -40°C to +45°C** makes these luminaires suitable even in extreme climatic conditions. Their impressive durability, **exceeding 110,000 hours**, guarantees long-term use without the need for frequent maintenance. Moreover, various available color temperatures and different lighting angles allow you to adapt the lighting to the specificity of a given facility, ensuring excellent visibility and comfort of use.

TECHNICAL DATA

Light sources	LEDs Lumileds ⁵⁰⁵⁰
Power consumption	100, 120, 200, 240, 300, 400, 480 ±5%W
Luminous flux of the luminaire	11219±5%LM - 64252±5% LM
Luminous efficiency of the luminaire	112±5%LM/W - 161±5% LM/W
Color temperature	3000K, 4000K, 5000K, 5700K
Color rendering index (CRI)	>70, optional CRI>80, CRI>90
Service life	>110 000Hrs (L70B50)
Working temperature	-40°C - 45°C
Light angles	10°,15°,20°,40°,60°,90°,P50,100°x140°
Body	Aluminium, PC
Color	Black
Tightness class	IP66
Degree of impact protection	IK10
Weight	100, 120W - 2,2±0,2kg 200, 240W - 5,5±0,2kg 300W - 7,5±0,2kg / 400, 480W - 10,0±0,2kg
Supply voltage	AC100-277V
Frequency	50/60 Hz
Warranty	5 years with the possibility of extension
Control systems	on-off, 1-10V dim, DALI
Other	modules can be adjusted within 25°
Accessories	anti-glare louvre, connector for mounting on a Ø60mm pole, bracket for ceiling or hanging mounting

PRODUCTS GROUP

Catalog number	Name	Control	Luminaire power	Luminous flux of the luminaire	Luminous efficiency of the luminaire	Color rendering index
LL03-FL028-100-202R	LED Stadium Light		100W	18714 LM	161 LM/W	>70
LL03-FL028-100-202C	LED Stadium Light	●	100W	18714 LM	161 LM/W	>70
LL03-FL028-100-202A	LED Stadium Light	●	100W	18714 LM	161 LM/W	>70
LL03-FL028-120-202R	LED Stadium Light		120W	18 714 LM	156 LM/W	>70
LL03-FL028-120-202C	LED Stadium Light	●	120W	18 714 LM	156 LM/W	>70
LL03-FL028-120-202A	LED Stadium Light	●	120W	18 714 LM	156 LM/W	>70
LL03-FL028-200-202R	LED Stadium Light		200W	32 108 LM	160 LM/W	>70
LL03-FL028-200-202A	LED Stadium Light	●	200W	32 108 LM	160 LM/W	>70
LL03-FL028-200-202C	LED Stadium Light	●	200W	32 108 LM	160 LM/W	>70
LL03-FL028-240-202R	LED Stadium Light		240W	37 895 LM	155 LM/W	>70
LL03-FL028-240-202R	LED Stadium Light	●	240W	37 895 LM	155 LM/W	>70
LL03-FL028-240-202C	LED Stadium Light	●	240W	37 895 LM	155 LM/W	>70
LL03-FL028-300-202R	LED Stadium Light		300W	48 285 LM	161 LM/W	>70
LL03-FL028-300-202C	LED Stadium Light	●	300W	48 285 LM	161 LM/W	>70
LL03-FL028-300-202A	LED Stadium Light	●	300W	48 285 LM	161 LM/W	>70
LL03-FL028-400-202R	LED Stadium Light		400W	64 283 LM	161 LM/W	>70
LL03-FL028-400-202C	LED Stadium Light	●	400W	64 283 LM	161 LM/W	>70
LL03-FL028-400-202A	LED Stadium Light	●	400W	64 283 LM	161 LM/W	>70
LL03-FL028-480-202R	LED Stadium Light		480W	76 278 LM	159 LM/W	>70
LL03-FL028-480-202C	LED Stadium Light	●	480W	76 278 LM	159 LM/W	>70
LL03-FL028-480-202A	LED Stadium Light	●	480W	76 278 LM	159 LM/W	>70

*The given luminous fluxes and luminaire efficiencies apply to 90° lenses

ADVANTAGES

- luminaire luminous efficiency of 161 lm/W
- service life up to 110,000 hours
- available in protection class I
- modern design and solid workmanship
- Polish product

PRODUCT USE:

- sports facilities
- pitches and stadiums
- sports and entertainment halls
- ski slopes

DIMENSIONS [MM]



100W/120W - 310x122x115mm



200W/240W - 358x263x143mm



300W - 403x358x143mm



400-480W - 544x358x143mm



Lars Lighting Sp. z o.o.
St. Zygmunta Vogla 8,
02-963 Warsaw
POLAND

office@larslighting.com
www.larslighting.com

Sensor

LL111DH, LL112DH

Intelligent Motion Sensor with
mixing Daylight and Artificial Light



Intelligent motion sensor with dimming via a 0-10V signal with a built-in sensor for mixing natural and artificial light. Thanks to the unique double light sensor solution, it can distinguish sunlight from artificial light. With the appearance of sunlight, automatically, using the output with a 0-10V signal after motion detection by the microwave sensor, the LL111DH and LL112DH sensor proportionally reduces the lighting power of the lighting fixture in the set time "TIME ML". The LL111DH sensor can turn off the fixture using a 0V control signal (of course, the lighting fixture must be equipped with a power supply with a 0-10V control input, for a fixture with a 1-10V input, the fixture will light with minimum power - please confirm that the fixture has a 1-10V input can be controlled by a 0V signal).

Note: the sensor can be installed inside the luminaire behind the luminaire's own cover!

The LL111DH and LL112DH sensor has a motion sensor deactivation function, which allows for flexible configuration in rooms for various purposes. In practice, after the motion sensor is turned off, the light mixing function remains - that is, as long as the power supply is turned on, the luminaire illuminates with a power dependent on the presence of sunlight. The motion sensor deactivation function is used in rooms such as offices and classrooms - i.e. places where people are constantly present.

BENEFITS

The use of the LL111DH and LL112DH sensor brings tangible benefits in saving electricity consumption for lighting, in the example of corridors, **up to 93% reduction compared to fluorescent lighting!**

TECHNICAL DATA

Power supply	12Vdc-24Vdc (max. 30Vdc) / $\geq 25\text{mA}$
Output signal	60 - 300W
Sensor for mixing daylight and artificial light	A special double sensor that selectively recognizes natural sunlight and artificial light
Setting the intensity of daylight and artificial light	Smooth adjustment from 2lx - 999lx (with a change every 1lx), disabled
Dimmer control	YES, 0-10V
Adjusting the light power when motion is detected	Smooth adjustment from 1lx - 999lx (with a change every 1lx), sensor turned off
Motion detection field (diameter)	12m max., range adjustable on a scale from 1-5
Deactivation of the motion sensor	YES
Normal lighting time (100%)	From 5s. up to 60s. - adjustment every 1 second, from 1 minute to 99 minutes - adjustment every 10 s.
Lighting time with reduced power	From 5s. up to 60s. - adjustment every 1 second, from 1 minute to 99 minutes - adjustment every 10 s.
Wireless remote control	YES
Max. mounting height	6m., 12m.
Working temperature	-20°C - +70°C
Tightness class	IP20
Size	77mm x 27mm x 14mm

PRODUCTS GROUP

Catalog number	Name	Control	Motion Detection	Light Mixing	Range
LL111DH	Intelligent Sensor LED Lars Lighting 6m	●	●	●	6m
LL112DH	Intelligent Sensor LED Lars Lighting 12m	●	●	●	12m

ADVANTAGES

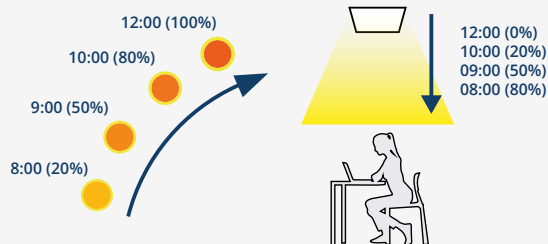
- Save up to 93% on electricity costs
- Limit unnecessary lighting
- Maintenance-free operation of the panels thanks to an intelligent sensor
- Ensure the safety of guests, customers and employees
- Solid workmanship
- CO2 reduction
- High color rendering index - very good light for monitoring
- Versatile use
- Polish product

PRODUCT USE:

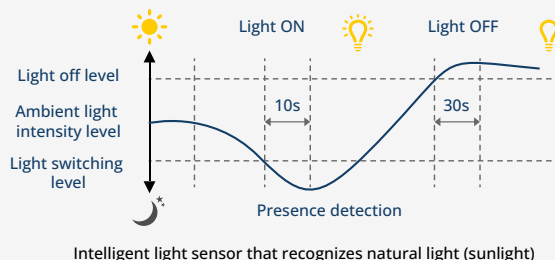
- offices
- schools
- offices
- production halls
- warehouses

DIMENSIONS [MM]

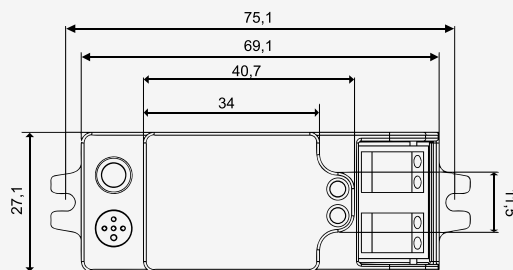
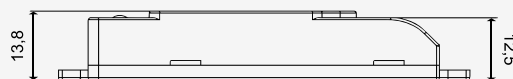
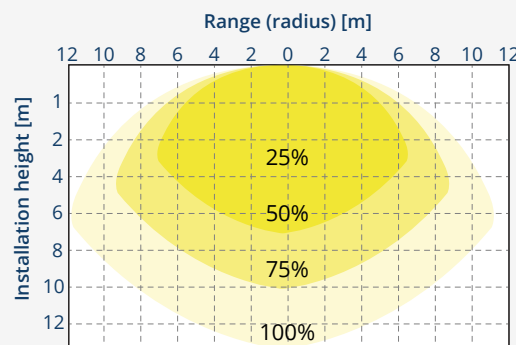
PRINCIPLE OF LIGHT MIXING



SENSOR OPERATION AND RANGE

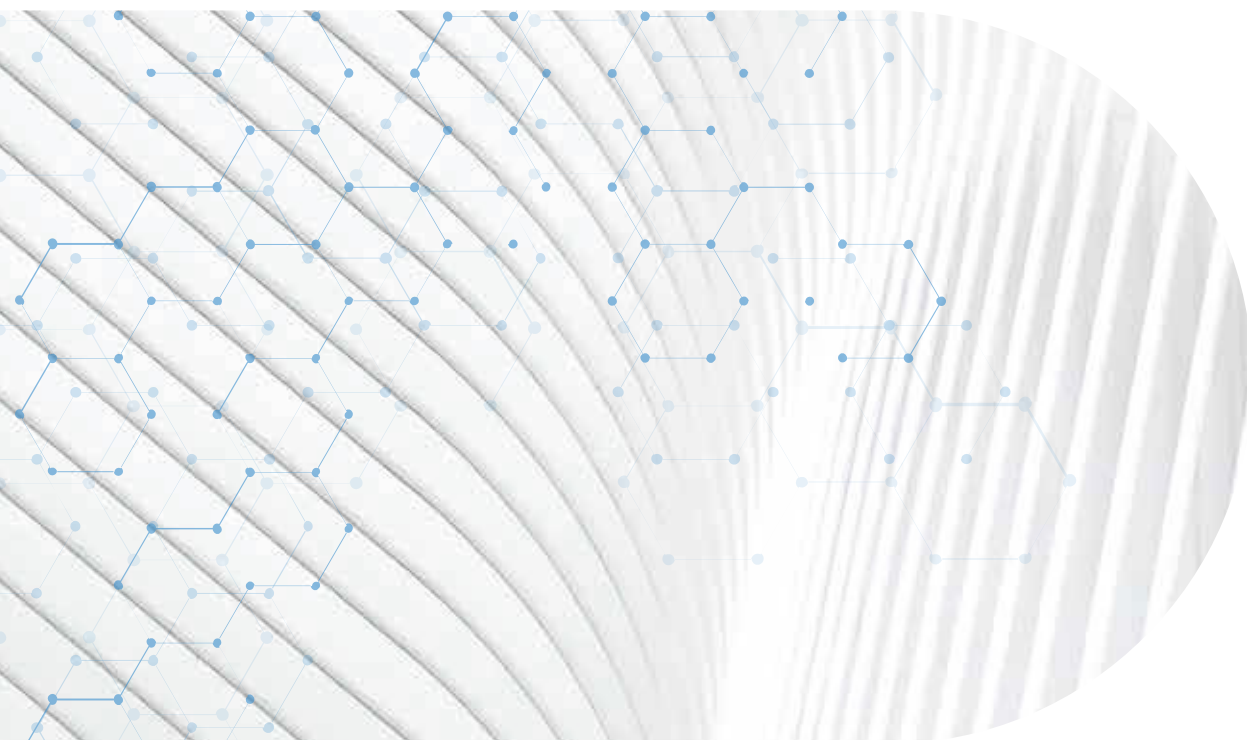


Intelligent light sensor that recognizes natural light (sunlight)



Lars Lighting Sp. z o.o.
St. Zygmunta Vogla 8,
02-963 Warsaw
POLAND

office@larslighting.com
www.larslighting.com



Bright choice for a **green future**

Lars Lighting Sp. z o.o.

st. Zygmunta Vogla 8,
02-963 Warsaw

office@larslighting.com

www.larslighting.com

